



Newsletter April 2022 | Volume I Issue II



Rogers & Brown's New State of the Art Headquarters Building- Ladson, SC

Rogers & Brown Monthly Newsletter

Inside the Issue:

- Regulatory Developments
- Domestic Freight Market
- International Freight Market
- Port News
- R&B Service Highlights



Regulatory Developments

USTR Issues Determination of Reinstatement of Certain Exclusions from China Section 301 Tariffs

- **On Wednesday, March 23rd, 2022**, an announcement declared by the United States Trade Representative, stated "its determination to reinstate certain previously granted and extended product exclusions in the China Section 301 Investigation. The determination reinstates 352 of the 549 eligible exclusions. The reinstated product exclusions will apply as of October 12, 2021, and extend through December 31, 2022" (USTR)

[Reinstated Exclusions Here!](#)

International Freight Market

Ocean Freight Rates

- Internally, Rogers & Brown has seen a **33% decrease** in ocean freight from the beginning of February 2022 to mid-April 2022 via transpacific lanes.
- While the rates have generally softened in recent months, they are expected to spike again as Shanghai reopens to full capacity:



China's COVID lockdown is making the supply chain backlog worse

"1 in 5 container ships are stuck outside of congested ports as global supply chain backlogs grow increasingly severe."

Shanghai is now in week four of COVID-19 lockdown, congestion has

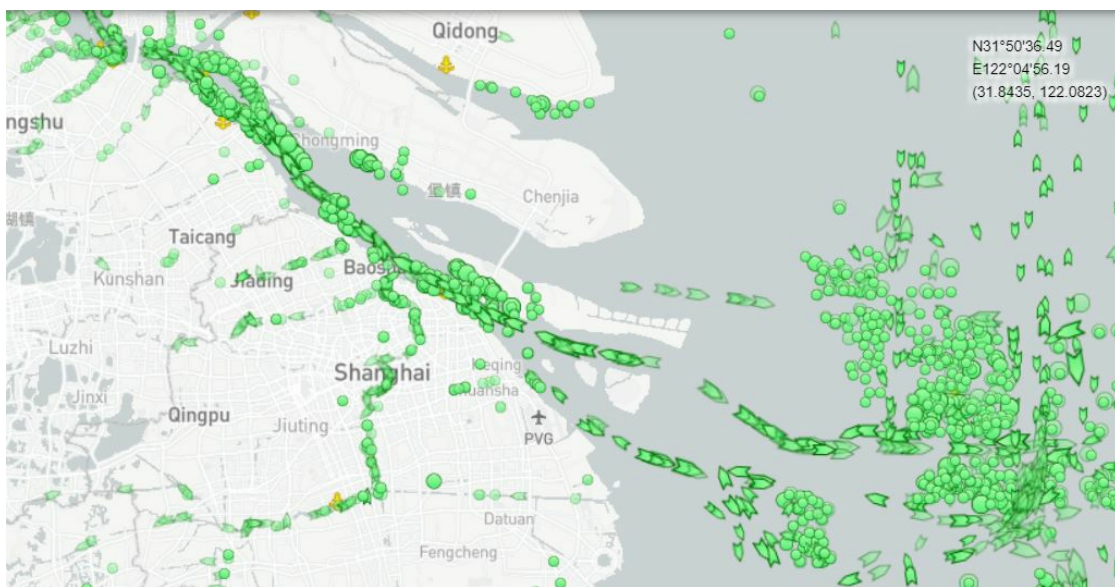
doubled since the middle of March. About 20% of the 9,000 container ships in the world are locked in the Port of Shanghai's congestion. As of April 19th, 506 cargo vessels are awaiting berthing at the docks in China.

The Port of Shanghai reports being back to "normal" operations with no delays due to the new protocols of on-site living. However, local trucking restrictions are still causing delays.

[Read More](#)

Source: [Fortune](#)

Shanghai Port Congestion:

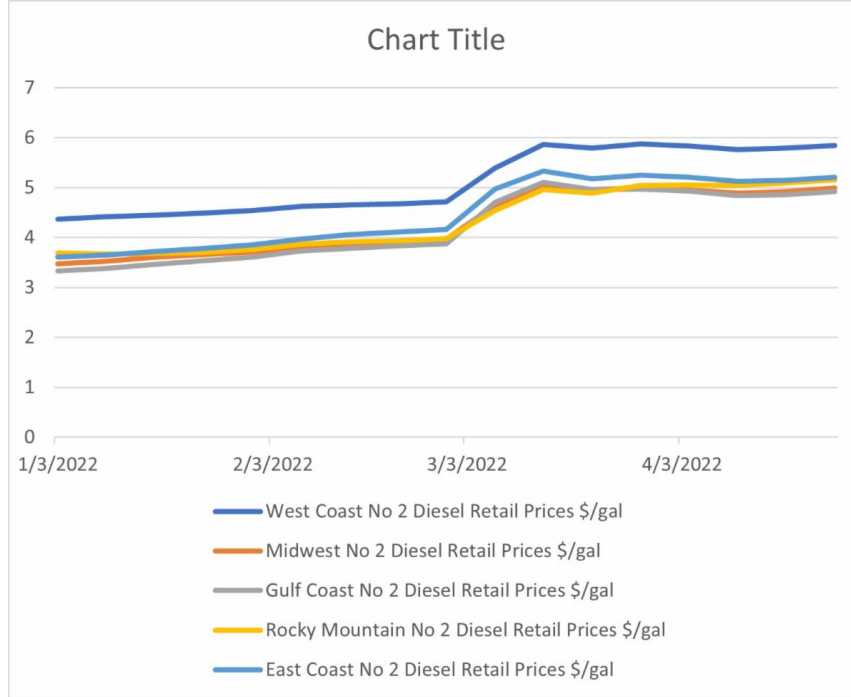


Source: [Marine Traffic](#)

Above is the current state of the Port of Shanghai as of April 25th, 2022. Currently, 775 cargo vessels are at the dock or in waiting around the Port of Shanghai.

Domestic Freight Market

The ***U.S Energy Information Administration*** reports on the current state of highway retail diesel prices (*weekly*).

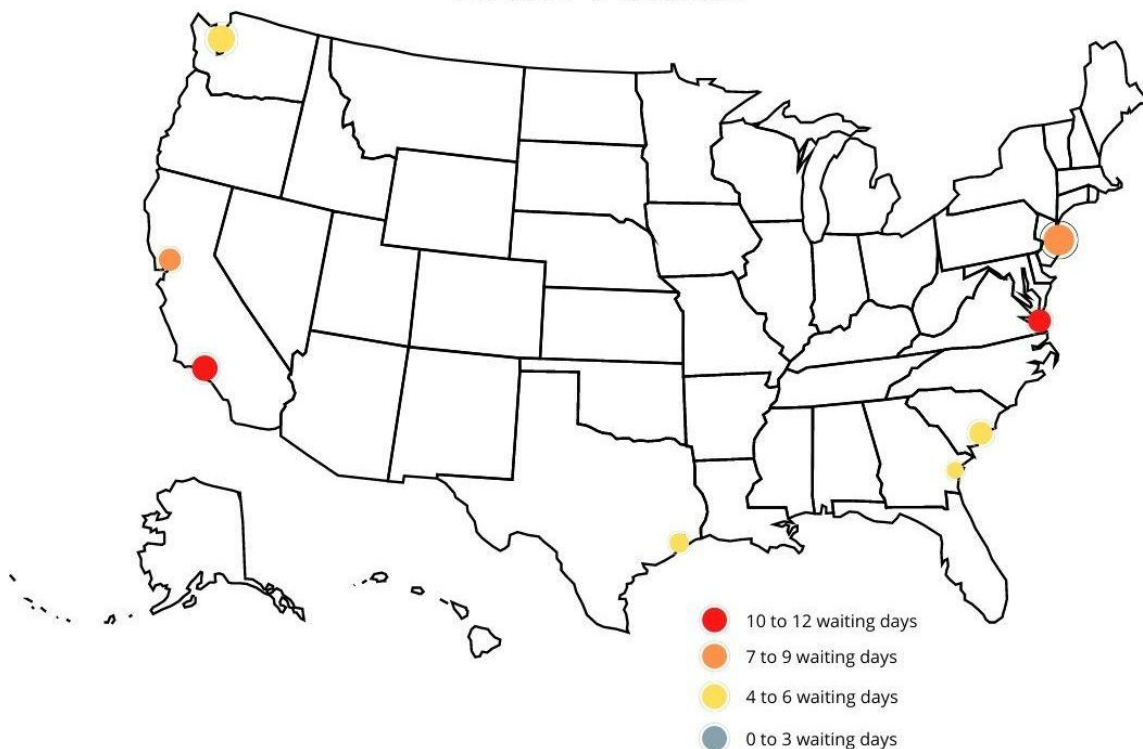


Source: Energy Information Administration

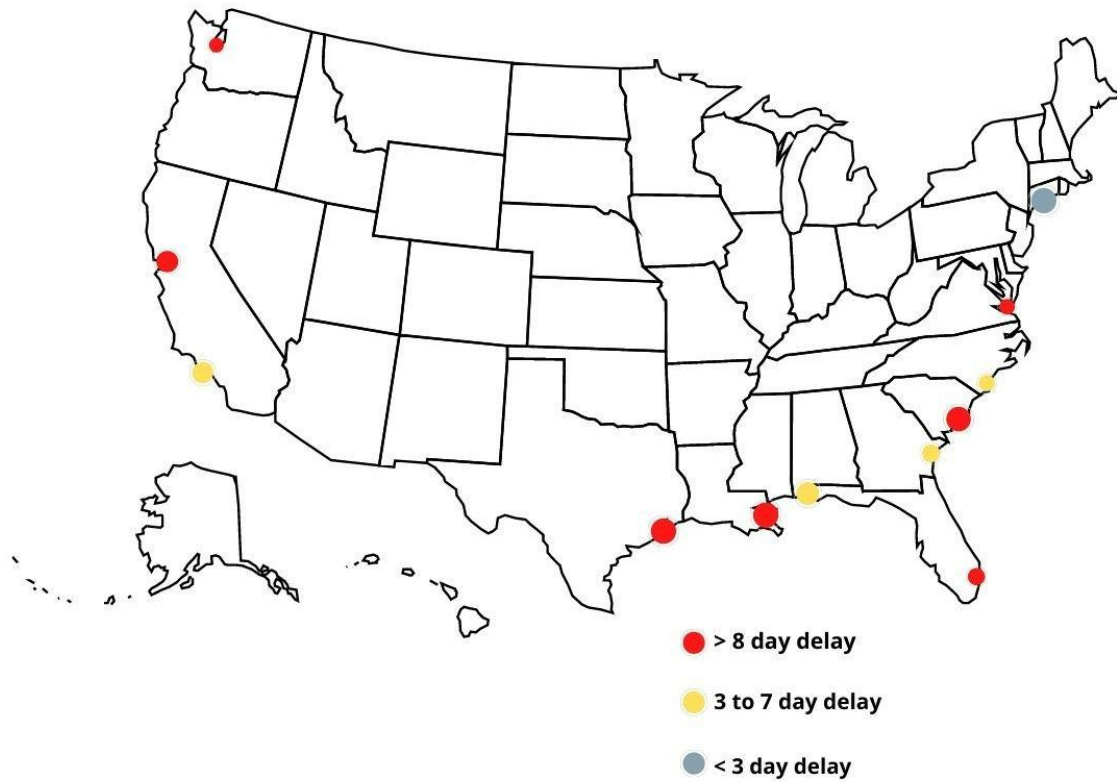
Port News

- Port congestion continues to be a major issue for importers and exporters throughout the US. Some relief has been seen since the Port of Shanghai lockdown began, but shippers and importers are concerned with what is to come.

Estimated Berthing Wait Times



Cargo Vessel Delays



R&B Service Highlight

Need help Transloading/Cross-docking your product?

Let **Brown Distribution Centers** help you with your transloading/cross-docking needs.

Transloading is a cost-effective and efficient way to bring ocean containers inland

efficiently. Transloading has grown to be more necessary with the shortage of containers, chassis, and space in the Charleston area.

Located 12 miles from Charleston ports, Brown Distribution Centers has a full-service transloading operation to help your company with transloading/cross-docking needs.

Please email sales@rogers-brown.com for a quotation today.

Our Services



Rogers & Brown | 9550 Hamburg Road, Ladson, SC 29456

[Unsubscribe](#) gabe_mcgann@rogers-brown.com

[Update Profile](#) | [Constant Contact Data Notice](#)

Sent by bysarah_stlaurent@rogers-brown.com in collaboration with



Try email marketing for free today!